

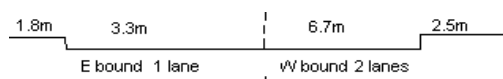
YEAR 2013

CORE STATION 1107

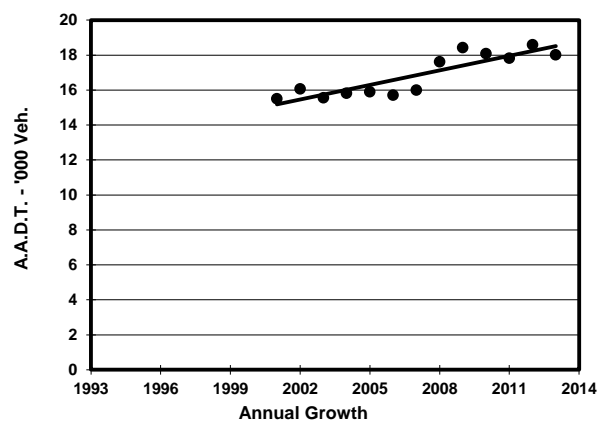
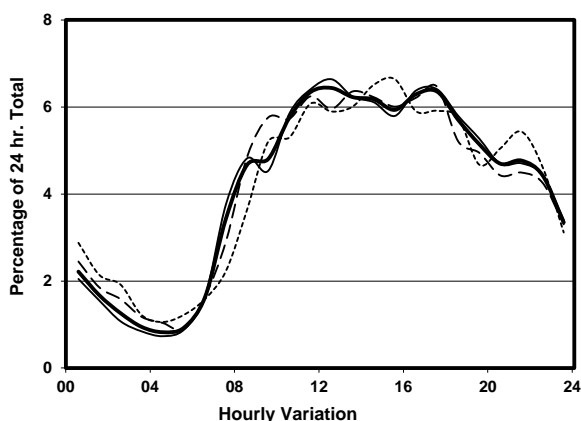
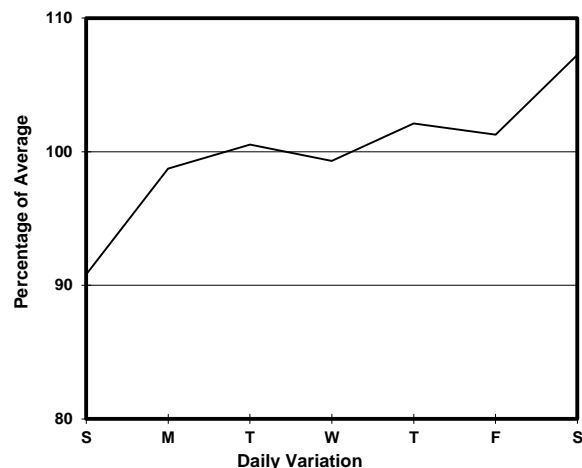
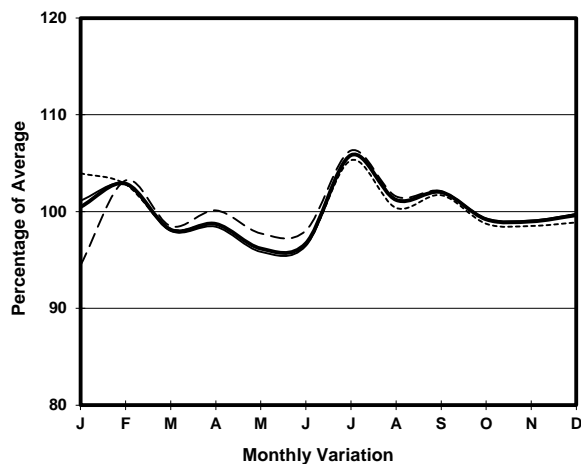
ROAD NETWORK MINOR

ROAD TYPE LOCAL DISTRIBUTOR

LINK TUNG LO WAN RD (from CAUSEWAY RD to MORETON TERRACE)



1. TRAFFIC FLOW VARIATION AND GROWTH



2. TRAFFIC CHARACTERISTICS (BY DIRECTION)

Parameter	All - Day	Mon. - Fri.	Sat.	Sun.
EAST BOUND				
A.A.D.T.	3500	3470	3810	3460
R 12 / 24 - %	69.6	70.6	67.4	67.7
R 16 / 24 - %	88.8	89.6	86.6	87.2
AM Peak Hour	0900-1000	0900-1000	0900-1000	0900-1000
One-way flow at AM peak hour	190	190	230	170
T - % (AM)	-	2.2	-	-
PM Peak Hour	1600-1700	1600-1700	1600-1700	1800-1900
One-way flow at PM peak hour	220	230	240	250
T - % (PM)	-	-	-	-
Prop.of commercial vehicles - 16 hr.	-	1	-	-
WEST BOUND				
A.A.D.T.	14520	14710	15590	12960
R 12 / 24 - %	67.8	68.3	68.1	64.4
R 16 / 24 - %	86.8	87.4	86	84.3
AM Peak Hour	0800-0900	0800-0900	0900-1000	0900-1000
One-way flow at AM peak hour	680	710	890	690
T - % (AM)	-	12	-	-
PM Peak Hour	1700-1800	1700-1800	1700-1800	1700-1800
One-way flow at PM peak hour	960	980	1040	810
T - % (PM)	-	11.7	-	-
Prop.of commercial vehicles - 16 hr.	-	8.8	-	-

3. OTHER INFORMATION AND COMMENT

4. Vehicle classification and occupancy - Monday to Friday

Time		Class of vehicle									
		Motor Cycle	Private Car	Taxi	Private LB	PLB	Goods veh.		Non Fr. Bus	Fr. Bus	
							Light	M & H		SD	DD
0700-0800	Pro	3.5	20.8	38.1	6.1	0.0	16.5	0.9	9.5	0.4	4.3
	Ocp	1.0	1.5	1.6	12.7	0.0	1.3	2.0	44.4	17.5	24.4
0800-0900	Pro	1.9	62.5	12.0	1.9	0.0	12.0	0.5	6.3	0.2	2.6
	Ocp	1.0	1.5	1.8	8.0	0.0	1.9	1.0	20.4	15.0	24.2
0900-1000	Pro	3.9	64.4	10.6	0.6	0.0	13.3	0.6	2.2	0.3	4.2
	Ocp	1.0	1.5	1.9	3.0	0.0	1.7	1.0	11.3	18.0	13.3
1000-1100	Pro	2.4	41.3	27.7	3.5	0.0	18.9	1.8	1.2	0.0	3.2
	Ocp	1.0	1.4	1.7	1.7	0.0	1.5	2.0	10.5	0.0	11.3
1100-1200	Pro	6.7	43.1	23.5	1.1	0.6	19.6	1.1	1.1	0.1	2.9
	Ocp	1.0	1.6	1.8	2.0	1.0	1.8	1.5	3.0	30.0	11.3
1200-1300 Peak hour	Pro	2.9	51.7	18.0	0.5	0.0	21.5	0.0	2.4	0.0	2.9
	Ocp	1.2	1.6	1.8	1.0	0.0	1.6	0.0	17.0	0.0	12.5
1300-1400	Pro	2.0	49.6	28.6	1.0	0.0	12.8	1.0	2.0	0.1	2.8
	Ocp	1.0	1.5	1.4	2.0	0.0	1.9	1.0	4.3	6.0	10.7
1400-1500	Pro	3.0	54.3	14.7	1.0	0.0	18.8	0.5	4.6	0.1	2.9
	Ocp	1.2	1.5	1.5	1.5	0.0	1.7	1.0	5.4	6.0	10.7
1500-1600	Pro	2.1	50.8	27.2	1.5	0.0	10.8	3.1	1.5	0.1	2.8
	Ocp	1.0	1.4	1.7	5.3	0.0	1.8	2.5	4.3	19.0	12.9
1600-1700	Pro	0.7	55.6	26.0	0.7	0.0	7.9	0.7	3.6	0.2	4.5
	Ocp	1.0	1.5	1.6	2.0	0.0	1.3	1.0	9.4	13.0	10.4
1700-1800	Pro	6.7	40.9	32.1	2.6	0.0	7.2	0.5	6.2	0.0	3.8
	Ocp	1.1	1.5	1.5	8.0	0.0	2.0	1.0	9.3	0.0	10.0
1800-1900	Pro	6.0	60.9	14.6	1.3	0.0	9.9	0.7	3.3	0.3	3.0
	Ocp	1.0	1.5	1.9	2.0	0.0	1.4	3.0	10.4	38.5	12.4
1900-2000	Pro	3.3	57.0	30.9	0.5	0.0	2.7	0.5	2.2	0.4	2.4
	Ocp	1.0	1.4	2.1	1.0	0.0	1.2	1.0	9.8	32.0	8.4
2000-2100	Pro	3.1	53.5	33.2	0.0	0.0	5.5	0.0	1.2	0.2	3.2
	Ocp	1.0	1.5	1.6	0.0	0.0	2.1	0.0	3.0	6.0	8.8
2100-2200	Pro	1.7	41.5	52.5	0.0	0.0	0.6	0.0	0.6	0.4	2.7
	Ocp	1.3	1.7	1.5	0.0	0.0	2.0	0.0	33.0	14.0	7.7
2200-2300	Pro	1.7	42.2	50.2	0.0	0.0	1.1	1.1	0.6	0.4	2.6
	Ocp	1.0	1.7	1.6	0.0	0.0	1.0	1.5	7.0	16.0	6.6
16 hours	Pro	3.2	50.0	27.0	1.3	0.1	11.3	0.8	2.9	0.2	3.1
	Ocp	1.0	1.5	1.7	5.6	1.0	1.7	1.7	15.5	19.3	12.3

Legend

- Pro.** Proportion of vehicles in % (Sum may not add up to 100% due to figure rounding)
- Ocp.** Average occupancy of vehicles
- M&H** Medium and Heavy